



Flight Plan & Site Survey

Created using **RPAS Wilco**[®]

Operation Name:	The 591 Giants
Pilot Name:	██████████
Pilot Certificate:	██████████
Flight Start:	January 25, 2023 9:50 AM
Flight End:	January 25, 2023 11:50 AM
Flight Area (Latitude):	42° 41' 11.87" N (42.687)
Flight Area (Longitude):	81° 49' 50.12" W (-81.831)
Altitude - Radius:	Alt: 700 ft - Rad: 926.0 m (0.5 nm)
Airspace:	UNCONTROLLED
FIR - Contact:	CZYZ - 905-676-4509
Weather:	0.1 Celsius - Snow, Ice, Overcast

Please ensure you received all required authorizations prior to flight.

Disclaimer

This Site Survey was created using RPAS Wilco by AIM Robotics. The flight plan contained is intended only for RPAS flights on the date/time and location specified. The user accepts all responsibility for the accuracy and completeness of the information contained.

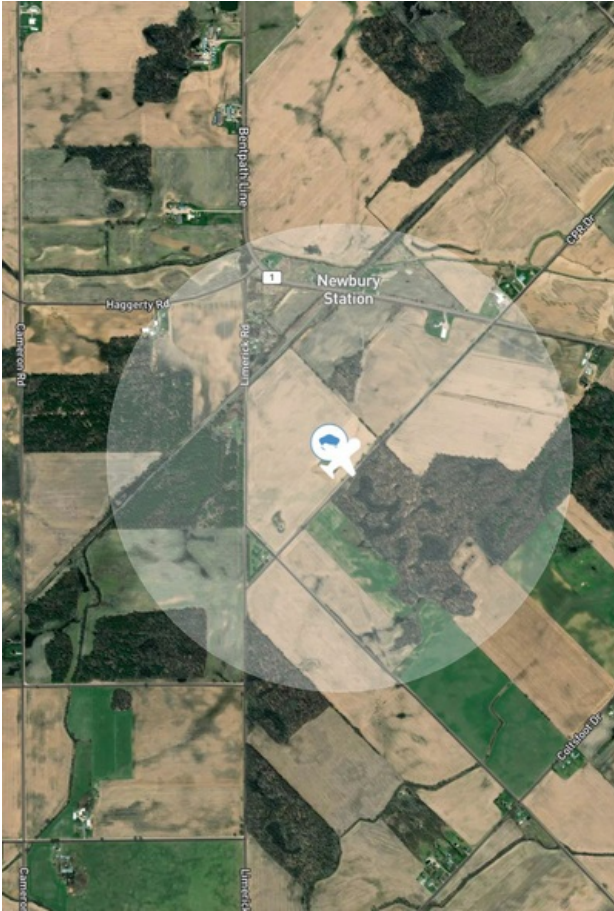
For the complete Terms & Conditions, see

<https://rpswilco.com/#/tnc>



Included

- Site Survey
- Obstacles (if available)
- Nearby Aerodromes
- Canadian Aviation Regulations
- GFA
- Aerodrome Supplements
 - METAR & TAF (if available)
 - NOTAMS
 - CFS

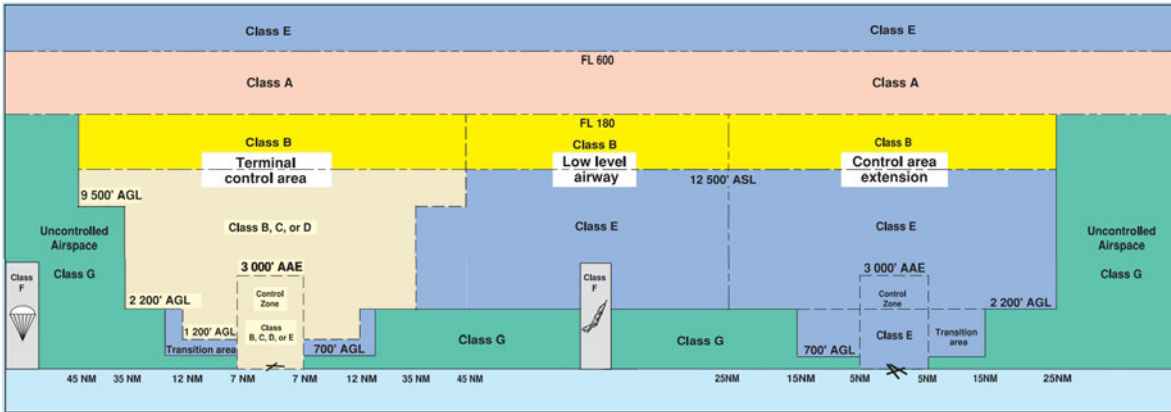
Flight Map



MAP Details

	Latitude	Longitude
 MODEL	42° 41' 11.87" N (42.687)	81° 49' 50.12" W (-81.831)
 Pilot	42° 41' 13.90" N (42.6872)	81° 49' 52.00" W (-81.8311)

Airspace Classification



Overlying Airspaces

Class	Name	Floor	Ceiling
E	Southern Ontario Low Level Control Area CAE	2500MSL	6500MSL
E	Southern Ontario Low Level Control Area CAE	6500MSL	12500MSL
B	Southern Ontario Low Level Control Area CAE	12500MSL	18000MSL

Nearest Aerodromes & Distance from Operation

HIGHGATE (CNA2 AERODROME Reg)	Lat: 42.554 Long: 81.803	14.92 KM	8.06 NM
DUTTON (CDT7 AERODROME Reg)	Lat: 42.659 Long: 81.512	26.227 KM	14.16 NM
MELBOURNE (CNM2 AERODROME Reg)	Lat: 42.824 Long: 81.549	27.602 KM	14.9 NM
RIDGETOWN (CARNIE AIRFIELD) (CRN2 AERODROME Reg)	Lat: 42.425 Long: 81.866	29.236 KM	15.79 NM

Weather Information for Mission Day

Summary: Cloudy skies throughout the day with snow.

Condition	Temperature	Feels Like	Precipitation	Visibility	Cloud Coverage	Wind Speed	Humidity
Snow, Ice, Overcast	0.1 Celsius	4.7 Celsius	100.0 %	3.1 Km	90.1 %	33.1 kph	93.9 %

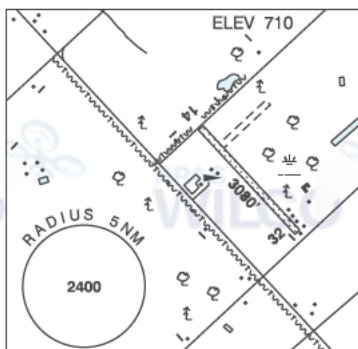
ONTARIO

AERODROME/FACILITY DIRECTORY

HIGHGATE ON

CNA2

REF	N42 33 16 W81 48 11 5N 8°W UTC-5(4) Elev 710' A5000
OPR	R. Spence 519-678-3326/3295 Reg PPR
PF	C-1,2,4,5 D-3,6
FLT PLN	
FIC	London 866-WXBRIEF (Toll free within Canada) or 866-541-4104 (Toll free within Canada & USA)
RWY DATA	Rwy 14/32 3080x80 turf
RCR	Opr Ltd win maint. Rwy soft when wet.
COMM	
ATF	ffc 123.2 5NM 3700 ASL
CAUTION	Trees 30 AGL aprx 100' fr Thld 32. P-line buried aprx 480' fr Thld 14. Line of trees 40 AGL 75' NE Rwy 14/32. Trees 35 AGL on apch to Rwy 32. Cultivated fields at edges of all rwys.



ONTARIO

AERODROME/FACILITY DIRECTORY

DUTTON ON

CDT7

REF	N42 39 33 W81 30 45 Adj WSW 9°W (2014) UTC-5(4) Elev 711' A5000	
OPR	John Bennetto 519-762-2279 Reg PPR	
FLT PLN		
FIC	London 866-WXBRIEF (Toll free within Canada) or 866-541-4104 (Toll free within Canada & USA)	
RWY DATA	Rwy 03(026°)/21(206°) 2878x65 GRASS Thld 03 displ 1505' Thld 21 displ 1193'	
RCR	Opr No win maint. Rwy soft when wet	
COMM		
ATF	ffc 123.2 5NM 3700 ASL	
CAUTION	Wires 150 AGL 0.25NM SW Thld 03. Grain silos 150 AGL 0.3NM NE Thld 21. Tower 307' AGL aprx 1NM NNE of A/D.	

ONTARIO

AERODROME/FACILITY DIRECTORY

MELBOURNE ON

CNM2

REF	N42 49 27 W81 32 55 Adj NE 8°W UTC-5(4) Elev 735' A5000	
OPR	B. Carruthers 519-289-5961/5837 Reg PPR	
PF	C-1,2,5 D-3,4,6	
FLT PLN	FIC London 866-WXBRIEF (Toll free within Canada) or 866-541-4104 (Toll free within Canada & USA)	
SERVICES	S 4,5	
RWY DATA	Rwy 14/32 1800x50 turf RCR Opr Ltd win maint. Rwy may be soft when wet.	
COMM	ATF tfc 123.2 5NM 3700 ASL	
CAUTION	Hi tension hydro twr (200-250 AGL) & P-lines aprx 1000' S of Thld 32 running SE. P-line 30 AGL aprx 50' fr Thld 32. Fence 5' high at N end. Cultivated fields at both edges of Rwy 14/32. Silo adj E to Rwy 14/32 within 100' of rwy centreline. Rwy surface uneven.	

ONTARIO

AERODROME/FACILITY DIRECTORY

RIDGETOWN (CARNIE AIRFIELD) ON

CRN2

REF	N42 25 29 W81 51 58 1.3SE 8°W (2015) UTC-5(4) Elev 740' A5000	
OPR	Brad Carnie 519-674-3643 Reg PN	
PF	C-1,2,4,5 D-3,6	
FLT PLN		
FIC	London 866-WXBRIEF (Toll free within Canada) or 866-541-4104 (Toll free within Canada & USA)	
RWY DATA	Rwy 14(144°)/32(325°) 1753x60 TURF	
RCR	Opr No win maint. Rwy soft when wet.	
COMM		
ATF	tfc 123.2 5NM 3700 ASL	
CAUTION	Unmarked P-lines 30 AGL 512' from Thld 32. Cultivated fields at all edges of rwy.	